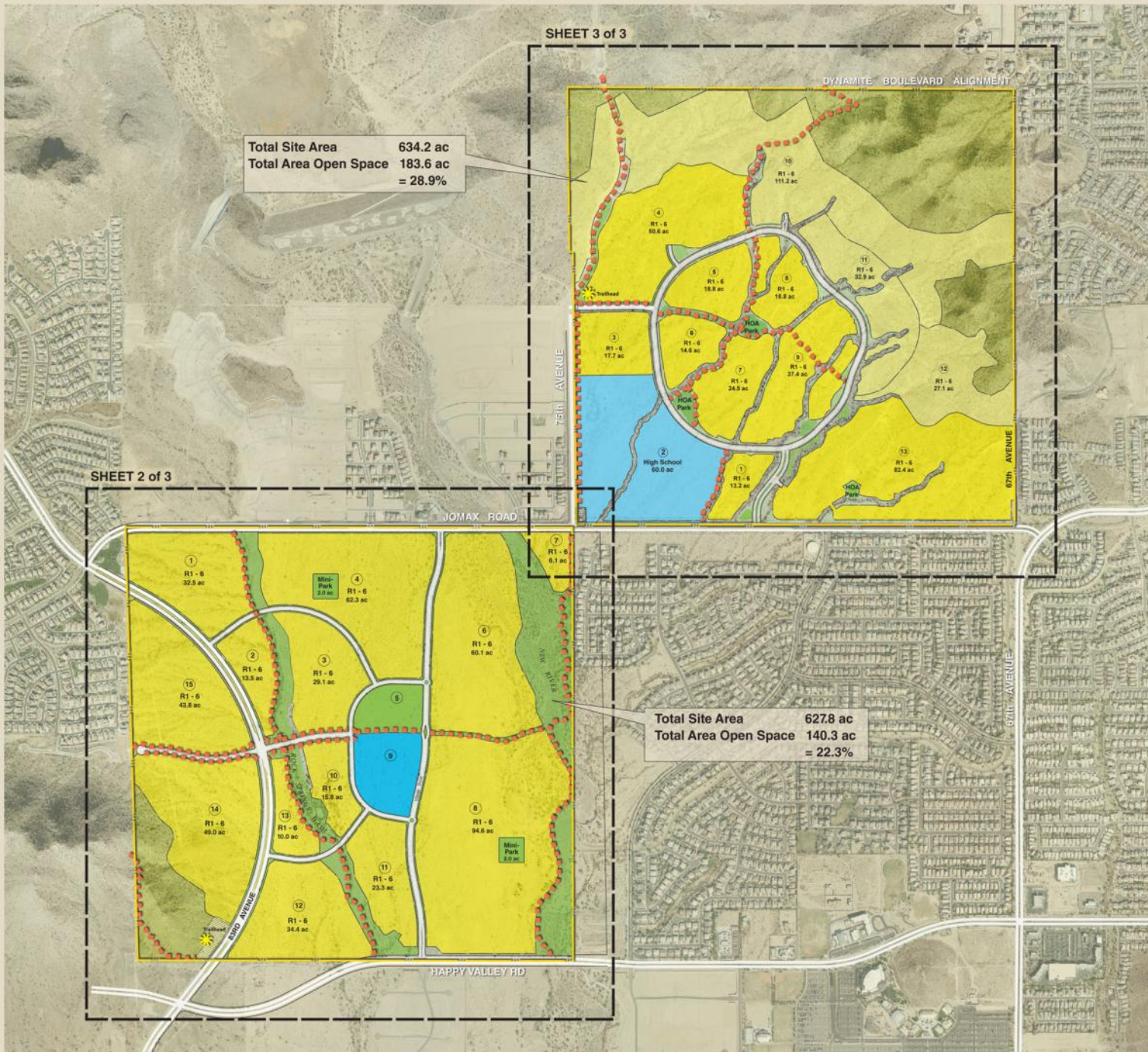


Open Space Plan



Total Project Area 1262.0 ac
Total Area Open Space 323.9 ac
Percent of Open Space 25.7 %

Public Open Space	South Area, ac	North Area, ac	Total Area, ac
Hillside Preserve (includes trailhead)	29.0	114.5	143.5
Neighborhood Park	8.0	-	8.0
Wash Areas	69.2	36.9	106.1
Subtotal	106.2	151.4	257.6
Private Open Space			
HOA Parks	7.6	6.6	14.2
Other	14.0	18.6	32.6
Internal Open Space	12.5	7.0	19.5
Subtotal	34.1	32.2	66.3
Total	140.3	183.6	323.9



Open Space Plan



LEGEND

Proposed Use	Area, ac
Park	15.6
Wash	69.2
Hillside (includes trailhead)	29.0
Other	14.0
Internal Open space	12.5
Total	140.3

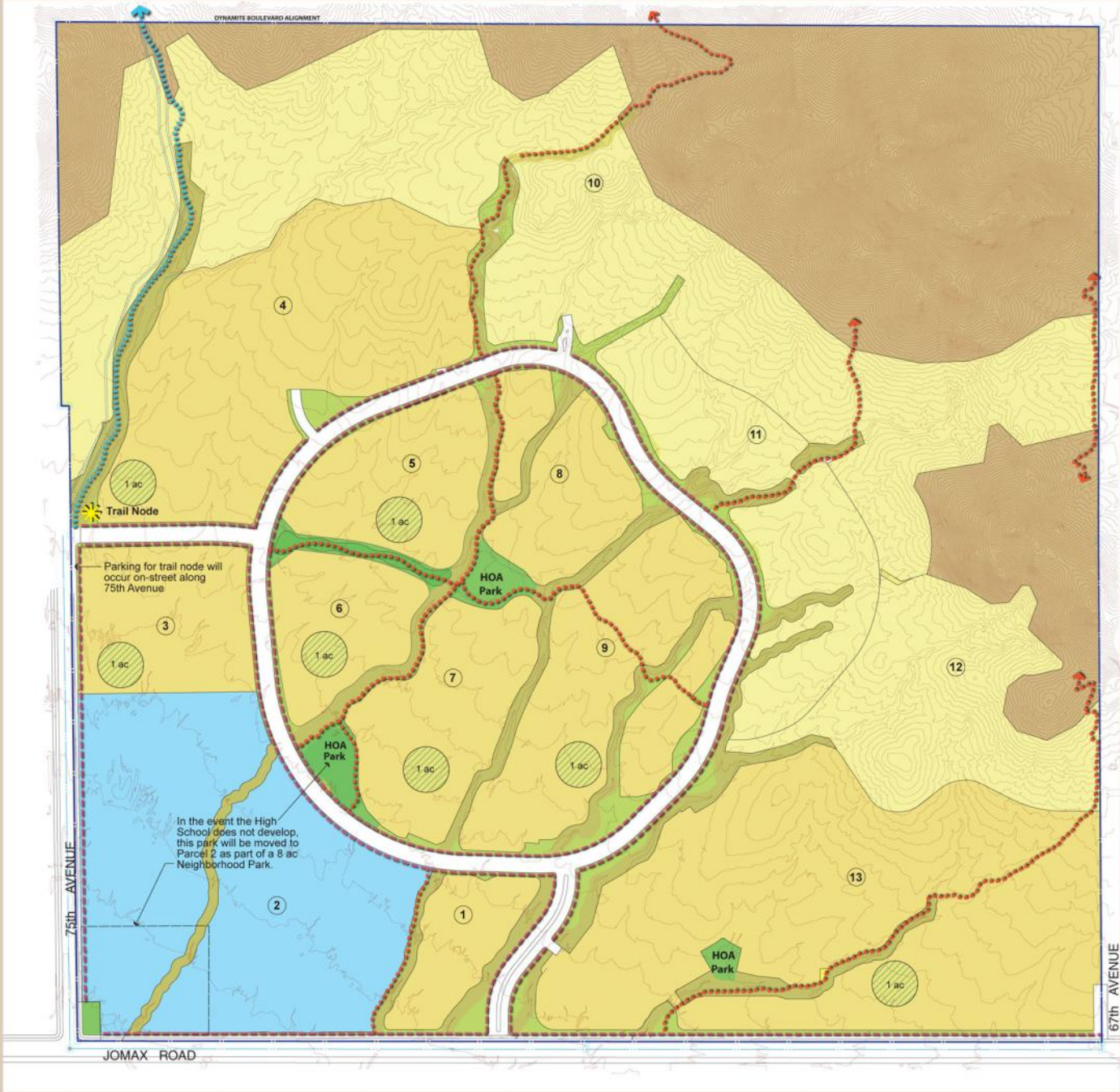
$$\begin{aligned} \text{Total \% O.S.} &= \frac{\text{Total Area Open Space}}{\text{Total Area Site Area}} \\ &= \frac{140.3 \text{ ac}}{627.8 \text{ ac}} = 22.3\% \end{aligned}$$

$$\begin{aligned} \text{Total \% Useable O.S.} &= \frac{\text{Total Area Useable Open Space}}{\text{Total Area Residential}} \\ &= \frac{62.2 \text{ ac}}{474.5 \text{ ac}} = 13.1\% \end{aligned}$$

NOTE: Total Useable Open Space =
Parks + Hillside + Trailhead + Internal Open Space
+ Trail Corridors within washes
Hillside Area and Neighborhood Park will be dedicated to City.



Open Space Plan



LEGEND

Open Space Type	Area, ac
 Park	6.6
 Wash / Green Belt	36.9
 Hillside	114.5
 Other	18.6
 Internal Open space	7.0
Total	183.6

$$\begin{aligned} \text{Total \% O.S.} &= \frac{\text{Total Area Open Space}}{\text{Total Area Site Area}} \\ &= \frac{183.6 \text{ ac.}}{634.2 \text{ ac.}} = 28.9\% \end{aligned}$$

$$\begin{aligned} \text{Total \% Useable O.S.} &= \frac{\text{Total Area Useable Open Space}}{\text{Total Area Residential Area}} \\ &= \frac{131.6 \text{ ac.}}{449.1 \text{ ac.}} = 29.3\% \end{aligned}$$

NOTE: Total Useable Open Space =
Parks + Hillside + Internal Open Space
+ Trail Corridors within washes

